

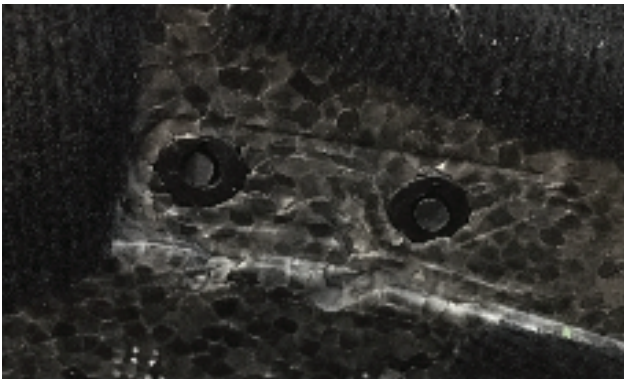
## Occigrip replacement

To avoid the snapbaskets from breaking when changing the Occigrip the following procedure can be followed:

1. Cut off the mushroom pins of the occigrip with a sharp and thin utility knife.



2. Remove the Occigrip from the helmet. The remains of the mushroom pin is now inside the snap basket.



3. Press the new Occigrip in place. The remains of the old mushroom pins will be pushed inside the EPS. This is OK.

